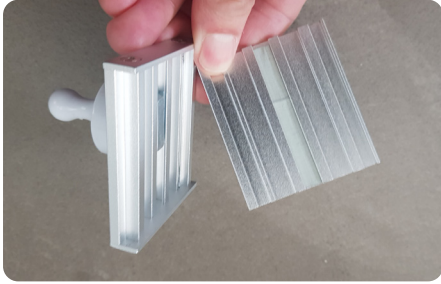


DS-MAG

Assembly instructions



1

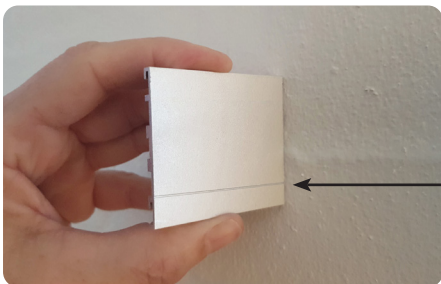
Unpack the sign from the packaging.
Unlock the mounting bracket with the magnetic key.



2

You can now loosen the profile and are ready to mount the profile on the wall, the glass or wherever it needs to be installed.

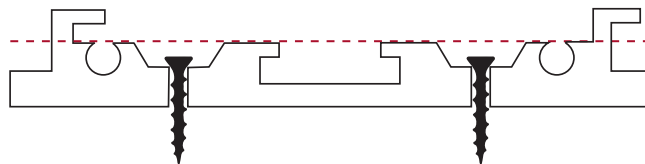
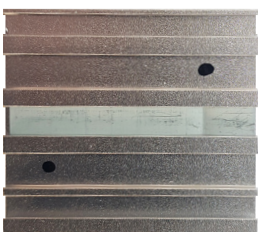
Photo shows DS-MAG mounted on the back of Bamboo Nordic.



3

Important:

Remember to turn the profile correctly when you mount it on the wall – there is a “groove” made on the back of the profile – the “groove” must face downwards. If you don’t do this, the sign will face the wrong way.



For assembly you can use, among other things:

1. Double-sided tape – make sure the type is suitable for the purpose
2. Mounting adhesive – make sure the type is suitable for the purpose
3. Screws and plugs – drill holes in the profile as shown in the sketch. The screw must be countersunk so that the screw head is not higher than the profile – otherwise the profile cannot be closed